



TOBACCO
FACTORY
THEATRES

AUG-DEC 2015

AUG-
DEC

BOX OFFICE: 0117 902 0344
TOBACCOFACTORYTHEATRES.COM

WELCOME

Welcome to autumn at Tobacco Factory Theatres. We've worked hard, and got lucky, to bring together a group of incredible artists and producers working across a range of artforms to create this wonderful season. We hope you're as excited by it as we are.

One of our crucial partners over recent years has been Puppet Place and we're thrilled to once again be the central venue for the biennial *Bristol Festival of Puppetry* (P06), which looks set to be more amazing than ever before. A key Bristol puppetry company is Green Ginger and we've been working with them over the past year to create *Outpost* (P16), and tour it round Europe. We're delighted to bring it back to Bristol for two weeks in October. On top of *Outpost* we're producing a range of excellent work ourselves from new writing (*140 Million Miles* P12), opera (*Falstaff* P18) and an eagerly awaited family Christmas show (*The Light Princess* P30) to the absolutely brilliant, and too rarely performed, *Living Quarters* (P10), by possibly the greatest living playwright, Brian Friel. We welcome wonderful local company *Living Spit* twice this season, with *Adolf and Winston* (P8) and their take on

A Christmas Carol (P33); very exciting emerging company *FellSwoop*, with *Ghost Opera* (P13); and the much-loved *Kid Carpet*, who will make his new show *Noisy Nativity* (P32) for Christmas.

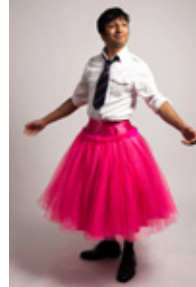
We're thrilled to be hosting *Out of Joint* again with *Jane Wenham: The Witch of Walkern* (P24), which I think will be one of the highlights of the season, as well as the return of *Paines Plough* from a triumphant New York run with the exceptional *Every Brilliant Thing* (P14). New to Bristol are *Transport Theatre* (*The Edge* P20), *Pilot Theatre* (*Outsiders* P28), *Up In Arms* (the heartrending *Eventide* by Barney Norris P26) and hysterical Irish company *Lords of Strut* with the aptly named *Chaos* (P21).

As well as the above we have top-class comedy, delightful family work and superb smaller shows: the rest of 2015 looks brilliant at Tobacco Factory Theatres and we hope to see you here often.

Ali

Ali Robertson, Director

Theatre Staff Director Ali Robertson / Director of Operations David Dewhurst / Head of Marketing Becky Cresswell / Marketing Officer Fran Ewins / Head of Development (Maternity Cover) Kate Rowland / Development Director Stephen Last / Development Officer Anne Marie Lo / Producer Kerrie Avery / Assistant Producer Jojo Townsend / Children and Young People Director Bryony Roberts / Technical Manager Matthew Graham / Operations Manager Katy Wilkes / Administrator (Maternity Cover) Becci Snape / Finance Manager Elaine Grünbaum / Finance Administrator Sally Lear / Director in Residence Nik Partridge / Technician Jennifer Sherlock / Operations and Administration Apprentice Holly-Inez Brownett / Box Office Staff Joe Deighan, Simon Harvey-Williams, Malaika Kegode, Ed Strong (Supervisor) / Duty Managers Nicci Bailey, Dawn Davies, Joe Deighan, Rachel Isaacs, James Lane, Morgan Matthews / Theatre Bar Staff Lucie Bowles, Kat Corey, Lily Eaton, Iris Hable, Debbie Hard, Chloe Kitching, Laurie Lax, Carmen Gabriele, Camilla Violo / Trustees Sarah Smith (Chair), Andrew Allan-Jones, David Fairclough, Bertel Martin, Mark Panay, John Retallack, Chris Sims, Anna Southall, Martin Wright





Tobacco Factory Theatres produces and presents excellent art in unique and intimate spaces.

We present a jam-packed programme of diverse and exciting shows, workshops and events, from international comedy acts to opera, family shows to modern classics and timeless masterpieces, plus an extensive programme of events and activities for young people, artists and audiences.

As well as what appears in this brochure, we also work across the city and country in ways that we don't always shout about. We're also producing more and more work ourselves. See P40 to find out more.

Awards

2014 Dancing Times Outstanding Male Performance for Jonathan Goddard in our co-production of *Dracula*

2014 Off West End Award-winner and 2013 Olivier Award-nomination for co-production of *Cinderella: A Fairytale*

2014 Winner Of Sky Arts Award For Dance for co-production of *Dracula*

2014 Netmums Best Theatre in the south west

Credits

Design: Fiasco Design

Print: zenithprintgroup.com

Cover image photo: Graphic Design by Dani Mayes & Dan Harker / Caravan at the beach by Morrison, R (1980s). Auckland War Memorial Museum – Tāmaki Paenga Hira. PH-NEG-RMS12-5-23 / Simon Armstrong by Jennie Scott

AUG-DEC 2015

On Sale Dates

Members & Business Club Priority Booking

Wed 22 July 12 noon

General Booking

Wed 29 July 10am

Special Offers

Get yourself a bargain! Look out for **£6/£7/£8** tickets on show pages and the calendar.

Business Club Member? Look out for **BC** on show pages and the calendar to get 2 for 1 tickets. See P41 for how to claim.

Tobacco Factory Arts Trust Registered Company no: 04536120
Registered Charity no: 1097542



WHAT'S ON AUG-DEC 2015



BFP15

PUPPET PLACE WITH TOBACCO FACTORY THEATRES, WATERSHED, ARNOLFINI, M SHED AND BRUNEL'S SS GREAT BRITAIN

The biennial festival returns, bigger and better than ever! BFP15 is expanding to locations across the city with Tobacco Factory Theatres as the hub for the live programme.

These pages showcase the programme for **adults and families** at Tobacco Factory Theatres, including **New Visions Live**. For details of the full BFP15 line-up, including the **free opening carnival, New Visions Films, DIY Puppetry, Smoking Puppet Cabaret and Out & About Puppetry across the city** please visit bristolfestivalofpuppetry.org or pick up a brochure.

Fri 28 August 8pm

COULROPHOBIA PICKLED IMAGE

Two clowns trapped in a cardboard world... Dik and Adam are traditional clowns in an untraditional situation. They have no idea why they are here. The only way to escape is to dupe two audience members into swapping places. Will this be possible? That depends on how persuasive they can be.

RUNNING TIME 1hr 10mins

AGE RECOMMENDATION 16+
(contains full frontal nudity)

TICKETS Full £14 / Concession £10

VENUE Factory Theatre
(Reserved Seating)

Sat 29 & Sun 30 August 8pm

SMALL SUICIDES: THREE BRIEF EXORCISMS OF QUOTIDIAN USE

ROCAMORA TEATRE

This surprising show uses an extravagant visual language to give expression to everyday objects.

Premiered in 1984, *Small Suicides* is a classic of object theatre.

RUNNING TIME 52mins

AGE RECOMMENDATION 12+

TICKETS Full £16 / Concession £10

VENUE Factory Theatre
(Reserved Seating)

Mon 31 Aug & Tue 01 Sept 8pm

WUNDERKAMMER: CABINET OF CURIOSITIES

FIGURENTHEATER TÜBINGEN

Welcome to the *cabinet of curiosities*: a collection of rare artefacts and objects that demonstrate the universal connection of all things. Exploiting the alluring grace of marionettes, *Wunderkammer* opens up a world where the senses are free to roam.

RUNNING TIME 1hr 10mins

AGE RECOMMENDATION 12+

TICKETS Full £16 / Concession £10

VENUE Factory Theatre
(Reserved Seating)

Wed 02 & Thu 03 September 8pm

THE DEPRAVED APPETITE OF TARRARE THE FREAK

WATTLE & DAUB FIGURE
THEATRE

A monstrous chamber opera for puppets based on the true story of Tarrare the Freak, an 18th century French revolutionary spy with an insatiable appetite for live cats, amputated limbs and the occasional toddler.

RUNNING TIME 1hr 50mins (inc. int.)

AGE RECOMMENDATION 12+

TICKETS Full £14 / Concession £10

VENUE Factory Theatre (Res Seating)

POST SHOW TALK Wed

Fri 04 & Sat 05 September 8pm

L'HOMME CONTENT DE RIEN: THE MAN HAPPY WITH NOTHING

LA COMPAGNIE DES
CHEMINS DE TERRE

Rene, the undertaker, is at a wake. Suddenly, he cracks and starts to tell the life of the deceased man using food and objects from the funeral banquet. Bread, celery, teapots and napkins transform into a remarkable parade of characters.

RUNNING TIME 1hr

AGE RECOMMENDATION 8+

TICKETS Full £16 / Concession £10

VENUE Factory Theatre
(Reserved Seating)

FOR FAMILIES

Thu 27 August 11am & 2pm

CAKE

WHALLEY RANGE ALL STARS

A story of valour and bravery as fresh as lemon-scented washing-up liquid! Two friendly dinner ladies slice open an enormous cake to reveal a mysterious world and a magical story.

RUNNING TIME 30mins

AGE RECOMMENDATION 4+

TICKETS £7

VENUE Brewery Theatre
(Reserved Seating)

Fri 28 August 11am & 2pm

THE OWL AND THE PUSSYCAT'S TREASURY OF NONSENSE

SOAP SOUP THEATRE

Welcome to The Treasury. The place where dreams come true and adventures begin... Soap Soup Theatre re-imagine Edward Lear's tale of nonsense with beautiful puppetry and an immersive soundtrack.

RUNNING TIME 55mins

AGE RECOMMENDATION 3+

TICKETS £7

VENUE Brewery Theatre
(Reserved Seating)

Sat 29 August 11am & 2pm

LITTLE FRANKENSTEIN

LEMPEN PUPPET THEATRE

A little horror for little horrors. A treat not to be missed! *Little Frankenstein* will tickle the imagination of everyone from 5 to 105 years old.

RUNNING TIME 50mins

AGE RECOMMENDATION 5+

TICKETS £7

VENUE Brewery Theatre
(Reserved Seating)

Sat 29 August 2.15pm

Sun 30 August 11am & 2pm

SMART AS A DONKEY

TAM TAM OBJEKTENTHEATER



Tam Tam use found objects and broken stuff to tell the story of plucky Donkey's escape from a horrible orphanage and his adventures in strange lands.

RUNNING TIME 1hr

AGE RECOMMENDATION 5+

TICKETS £8

VENUE Factory Theatre
(Reserved Seating)

Sun 30 August 12 noon & 3pm

CHICKEN LICKEN

DNA PUPPETRY &
VISUAL THEATRE



A witty and wonderful mix of three classic Ladybird book stories from DNA Puppetry & Visual Theatre in a recipe mixing puppets, clowning and original music.

RUNNING TIME 50mins

AGE RECOMMENDATION Ages 3-8

TICKETS £7

VENUE Brewery Theatre
(Reserved Seating)

NEW VISIONS

A platform for new work from emerging UK artists and companies.

VENUE Brewery Theatre

Mon 31 Aug & Tue 01 Sept 6.30pm

DRIFTERS

STRANGE ARRANGEMENT

A beautiful, comic and sad show where three shipwrecked buffoons discover hope and humour in paper friendships while plotting to escape purgatory.

RT 1hr 15mins / **AGES** 8+

TICKETS Full £12 / Concession £9

Wed 02 & Thu 03 Sept 6.30pm

CELL

SMOKING APPLES & DOGFISH

After being diagnosed with Motor Neurone Disease, Ted goes on a trip of a lifetime... and so does his pet fish. Told with humorous and heart-warming puppetry.

RT 1hr / **AGES** 11+

TICKETS Full £12 / Concession £9

Sat 05 September 6.30pm

#WATERLOOBRIDGE

ELUCIDATE

A desperate puppet stands on Waterloo Bridge until compassion finds him. An experimental piece explored with puppetry, projection, poetic language and animation.

RT 1hr / **AGES** 12+

TICKETS Full £10 / Concession £8

Fri 04 September 6.30pm

LAB:

EXPERIMENTS IN PUPPETRY

Five puppetry industry specialists will work together over a 2 day period and then share the performance results at this event, including discussion.

RT 1hr 10mins / **AGES** 12+

TICKETS £9

ADOLF AND WINSTON



LIVING SPIT

The brilliantly funny and wonderfully energetic Living Spit are back with their latest hit show.

Two Actors. Two World Leaders. One Black Dog.

London, 1939. Winston Churchill looks in the mirror, realises only he can steer our great nation through its darkest hour and steels himself for the hard road ahead.

Bristol, 2015. Howard Coggins looks in the mirror, shaves, realises he looks a bit like Winston Churchill and steels himself to break some bad news to his good friend, Stu.

Bristol, 2015. Stu Mcloughlin looks in the mirror and realises that he'll have to grow a little moustache.

Buoyed by the success of *The Six Wives of Henry VIII* and *Elizabeth I: Virgin on the Ridiculous*, and unafraid to tackle the big subjects in an essentially inconsequential way, Howard and Stu are back walking the tightrope of taste and decency with another slice of poorly researched history.

But will either of them escape from this war alive?

RUNNING TIME 1hr 10mins

AGE RECOMMENDATION 16+
(contains strong language)

TICKETS Full £12 / Concession £8
(no concession Fri or Sat eve)

BC (P41)

VENUE Brewery Theatre

"The energy and fun was infectious. A great night." [The Public Reviews](#)

"With an almost-total disregard for common sense...*Adolf & Winston* is a terrific production, gloriously silly and worth watching." [The Post](#)

"Howard and Stu are both true Bristol theatre stars. Quite rightly, they seem to be working constantly and this can only be a good thing for lucky theatre audiences." [Madam J-Mo](#)

"*Adolf & Winston* is brilliantly bonkers, with an inspired 15 minute musical race through the history of the Second World War." [Bristol Culture](#)

IMAGE: FARROWS CREATIVE



TRESPASS

MARK THOMAS

The incomparable Mark Thomas is back with his latest creation, following his very successful *100 Acts of Minor Dissent and Cuckooed*.

Trespass carries on from where *100 Acts of Minor Dissent* left off; using his signature style of theatre, stand-up, a dash of journalism, activism and a dollop of mayhem!

Mark asks the question: If the ramblers of the 1930's were here now what would they do to open up the cities? How do we turn the skyscrapers and corporate squares into our playgrounds? He sets out to try and carve a small space in the urban world where mischief and random chance can lurk.

No one knows where this show is going to end up so join him on the journey!

RUNNING TIME 1hr 50mins (inc. interval)

AGE RECOMMENDATION 16+

TICKETS Full £16 / Concession £14

VENUE Factory Theatre

★★★★★ "A brilliantly crafted hour... beautiful and heartfelt"
[Metro on Cuckooed](#)

★★★★ "A clever, funny and angry show... an excoriating, heartfelt monologue"
[The Guardian on Cuckooed](#)

★★★★ "Involving, inspiring, furious and funny" [The Times on Cuckooed](#)

★★★★ "Thomas manages to bring light and humour to even the most startling revelations of deceit"
[The Telegraph on Cuckooed](#)

IMAGE: STEVE ULLATHORNE

LIVING QUARTERS

BY BRIAN FRIEL

TOBACCO FACTORY THEATRES AND SHAKESPEARE AT THE TOBACCO FACTORY

Directed by Andrew Hilton / Designed by Angela Davies

We are delighted to present our new production of *Living Quarters*, by the celebrated author of *Translations*, *Faith Healer* and *Dancing at Lughnasa*. This is a major step in our ever increasing repertoire as a producer.

We're thrilled to build upon our flourishing relationship with Shakespeare at the Tobacco Factory as we co-produce with them, with the inimitable Andrew Hilton directing. The superb Simon Armstrong (*King Lear*, *The Cherry Orchard* and *Game of Thrones*) stars in the lead role.

An ordinary army officer suddenly becomes a hero in middle age. He returns in triumph to his battalion base in Donegal, to his family and to his young second wife. But a day of celebration will soon turn to tragedy.

The heart-rending story is fascinatingly told as a perpetual reconstruction, presided over by a master of ceremonies, referred to only as 'Sir'. The characters break from the narrative to plead with him to allow them to alter the course of events, but he ensures they follow on remorselessly to the moment that changed all their lives.

This captivating play, from one of the greatest of modern playwrights, has only ever been professionally performed once in England before, when it was directed by Andrew Hilton for *Show of Strength* in Bristol over 20 years ago. We're excited that Andrew will return to direct a new production of this masterwork.

AGE RECOMMENDATION 14+

TICKETS

Thu 17 – Mon 21 September
Previews All tickets £11

Sat 2.30pm All tickets £13

All other performances
Full £16 / Concession £13
(No Concession Fri or Sat eve)

BC (P41)

VENUE Factory Theatre
(Reserved Seating)

Production Investor
Simon Inch

IMAGE: Graphic Design by Dani Mayes & Dan Harker / Caravan at the beach by Morrison, R (1980s). Auckland War Memorial Museum – Tāmaki Paenga Hira. PH-NEG-RMS12-5-23 / Simon Armstrong by Jennie Scott

★★★★
"THE INTIMACY OF THE PROCEEDINGS THRILLS IN THIS UNAFFECTED REVIVAL."

The Guardian on Shakespeare at the Tobacco Factory's production of Tom Stoppard's *Arcadia*

★★★★
"A RICH, HUMANE DRAMA"

The Guardian on *Living Quarters* at Edinburgh's Royal Lyceum, 2007

"YET ANOTHER UNMISSABLE PRODUCTION."

A Younger Theatre on Shakespeare at the Tobacco Factory's production of Tom Stoppard's *Arcadia*

Originally created by Glasgow's Òran Mór, this wonderful series showcases new writing from established and emerging playwrights. Previous successes here include *Banksy: The Room in the Elephant* and *Helen*.

Wed 23 – Sat 26 September
Pies from 6.15pm / Play 7.15pm

Matinee Thu & Sat
Pies from 12.15pm / Play 1.15pm



IMAGE: MIFF WEAVER

140 MILLION MILES

TOBACCO FACTORY THEATRES,
ÒRAN MÓR AND TRAVERSE THEATRE

We don't see any reason to stay here – life on Earth really isn't that great, not for us.

Neil and Dawn have been offered the trip of a lifetime – a space-flight to Mars. All they have to do is complete basic training and sign some disclaimers. But is there something they're not being told? And what happens when they want to come back?

A new one-act play about what it means to leave the world you know behind you. *140 Million Miles* is written by Bristol's Adam Peck (Dramaturg on *Cinderella: A Fairytale* and *101 Dalmatians*) and directed by Nik Partridge (*Infinite Lives*), previously Director in Residence at Tobacco Factory Theatres. After it premières here it will go on to play at Glasgow's Òran Mór and Edinburgh's Traverse Theatre.

RUNNING TIME 50mins

TICKETS

Play only £7

Pre-show Pie & Pint plus Play £13

Includes a meat or veggie pie and a pint or soft drink. Limited availability, book in advance.

VENUE Pies & Pints Factory Theatre Bar
Play Brewery Theatre

The Idlewild Trust and The Thistle Trust are proud to support a Play, a Pie and a Pint at Tobacco Factory Theatres.

Wed 18 – Sat 21 November
Pies from 6.15pm / Play 7.15pm

Matinee Thu & Sat
Pies from 12.15pm / Play 1.15pm



IMAGE:
BY LESLIE BLACK OF BRIDGE AT A PLAY A PIE AND A PINT AT ÒRAN MÓR.

HAPPY HOUR

ÒRAN MÓR, IN ASSOCIATION WITH
TOBACCO FACTORY THEATRES AND
SHERMAN CYMRU

Anne's finally got both her children together again in the family pub to scatter her husband's ashes – somewhere...

Kay wants to hurry it along. Tom's just jetlagged. But Anne's having none of it. She wants to slow things down; say goodbye to Joe properly - then focus on the real reason they're here. The money.

Happy Hour is written by Anita Vettesse, who has worked extensively as an actor for nearly 20 years – this is her debut play as a writer. It is directed by Sherman Cymru's Associate Director Gethin Evans. Fresh from performances in its birthplace at Òran Mór, it will play here at Tobacco Factory Theatres before transferring to Cardiff's Sherman Cymru.

RUNNING TIME 50mins

TICKETS

Play only £7

Pre-show Pie & Pint plus Play £13

Includes a meat or veggie pie and a pint or soft drink. Limited availability, book in advance.

VENUE Pies & Pints Factory Theatre Bar
Play Brewery Theatre

GHOST OPERA

FELLSWOOP THEATRE DEVELOPED WITH THE LOWRY AND SUPPORTED BY TOBACCO FACTORY THEATRES

The award-winning FellSwoop Theatre preview their brand new production at Tobacco Factory Theatres before its première later in the year at The Lowry, Salford. A mesmeric two-hander, *Ghost Opera* explores the haunted in a spoken and sung performance.

Two strangers, both haunted by living ghosts in their everyday: one, her dying mother, and the other, his celebrity idol. Escaping to seek refuge at a spa retreat, the thirty year-old woman and the seventeen year-old boy meet, and together they try to resist becoming that which haunts them.

FellSwoop Theatre is a company on top form and one of Bristol's pride and joys. Their previous productions of *Ablutions* (winner of the Ignite Festivals Critics' Choice Award), *Belleville Rendez-vous* (winner of the NSDF Emerging Artist Award) and *Current Location* have intrigued and delighted audiences here and across the country.

This production is devised in development with The Lowry, Salford and we're proud to say it is the first project to be supported by our Artist Development Fund (see P40).

RUNNING TIME 1hr 15mins

AGE RECOMMENDATION 14+

TICKETS Full £9 / Concession £7

VENUE Brewery Theatre

"One of the UK's most innovative theatre companies." *Culture Trip*

"Quietly gripping and thoroughly unsettling, this piece climbs inside you, like the best examples of sci-fi."

Exeunt on Current Location

★★★★★ "Sexy, intriguing, intelligent, confident, FellSwoop's take on DeWitt's tragi-comic novel is a rock'n'roll riff on the poetry of addiction"

Venue on Ablutions

IMAGE: JACK OFFORD

EVERY BRILLIANT THING

PAINES PLOUGH AND PENTABUS
THEATRE COMPANY

Written by Duncan Macmillan
With Jonny Donahoe

We are totally delighted to present the Edinburgh Festival and Off-Broadway New York smash hit; a new play about depression and the lengths we will go to for those we love.

You're six years old. Mum's in hospital. Dad says she's 'done something stupid'. She finds it hard to be happy.

So you start to make a list of everything that's brilliant about the world.

Everything that's worth living for.

1. Ice Cream
2. Kung Fu Movies
3. Burning Things
4. Laughing so hard you shoot milk out your nose
5. Construction cranes
6. Me

You leave it on her pillow. You know she's read it because she's corrected your spelling.

Soon, the list will take on a life of its own.

Based on true and untrue stories. We're so pleased to be able to share this critically acclaimed, life-affirming show with Bristol audiences.

**"CAPTIVATING...
GUARANTEED TO
KEEP YOUR EYES
BRIMMING... OFTEN
VERY FUNNY...
TAKES THE CHILL
OFF THE DEPTHS
OF A LIGHT-
STARVED WINTER."**

New York Times

RUNNING TIME 1hr

AGE RECOMMENDATION 14+

TICKETS Full £13 / Concession £9

VENUE Factory Theatre
(Reserved Seating)

BSL INTERPRETED PERFORMANCE 
Thu 08 October 8pm
tickets@tobaccofactorytheatres.com

IMAGE: PHOEBE CHEONG

★★★★
**"HEART-
WRENCHING,
HILARIOUS...
POSSIBLY ONE OF
THE FUNNIEST
PLAYS YOU'LL EVER
SEE, FULL STOP."**

The Guardian



★★★★★
"FUNNY, CLEVER, AND SURPRISINGLY UPLIFTING."

The Telegraph

OUTPOST

“THE GRUBBY WORLD OF GREEN GINGER IS DELICIOUSLY DERANGED”

Metro on Rust

“CHAOTIC ANARCHY THAT EXPLODES FROM EVERY INCH”

Total Theatre on Rust

“AN INSPIRED MIX OF ART AND LUNACY”

The Guardian on Rust

GREEN GINGER, CO-PRODUCED WITH TOBACCO FACTORY THEATRES AND NORDLAND VISUAL THEATRE

Over the last year we’ve been proud to work with Green Ginger to co-produce a brand new production – *Outpost* - and we’re thrilled to bring it home to Bristol this autumn following a highly successful European tour.

If you're drunk on power can you ever sober up?

Luis and BK are stationed at a remote border crossing between their two countries. Luis believes in order and discipline. BK believes in taking things easy. And he believes that somewhere out there, mysterious creatures roam the desert. The chance discovery of a strange other-world takes the two guards on a journey into the dark heart of politics, tyranny and murder.

Absurd comedy and grotesque puppetry combine to explore nationalism, leadership and the terrible consequences of using another man’s toilet.

This funny, thought-provoking and highly skilled production received fantastic audience feedback and critical acclaim during an early European tour in 2014/15. This autumn *Outpost* is embarking on a UK tour, fresh from the prestigious World Puppet Theatre Festival in France.

RUNNING TIME 1hr 5mins

AGE RECOMMENDATION 12+

TICKETS

Full £13 / Concession £9
(no concession Fri or Sat)

Mon 12 – Thu 15 All tickets £8

BC (P41)

VENUE Brewery Theatre

IMAGE: JOSEPH WALLACE



FALSTAFF

BY VERDI

OPERA PROJECT
AND TOBACCO FACTORY THEATRES

Verdi's great opera *Falstaff* explodes onto our stage this autumn in a co-production between Opera Project and Tobacco Factory Theatres.

When the mischievous, lecherous Falstaff sets out to seduce the beautiful Mrs Ford and Mrs Page to get at their husbands' money, he feels sure to succeed. But will the women let him get away with it? And what will happen when their husbands find out his plans?

Much trickery, hilarity and humiliation ensues in Verdi's *Falstaff*; not only one of the greatest comic masterpieces, but also one of the supreme challenges in all opera with its hair-raising ensembles and breakneck pace.

Under the shadow of Herne's mighty oak will be a stunning cast headed by the incredible Simon Thorpe (*Tosca*). *Falstaff* will be sung in English and performing Verdi's lyrical score will be the exceptional Opera Project orchestra.

Boito's masterly libretto, which takes inspiration from Shakespeare's *Merry Wives of Windsor* and *Henry IV*, is universally regarded as the finest of all Shakespeare-based operas. Following last season's sell-out *Madam Butterfly*, Verdi's final farewell work, and his only comedy, is bristling with energy and awash with fabulous melodies. We can't wait!

RUNNING TIME 2hrs 40mins
(inc. two intervals)

TICKETS

Wed 14, Tue 20 &

Wed 21 October £32

Fri 16 & 23 October £35

Sat 17 & 24 October £37

Orchestra Seats There will be 19 seats in close proximity to the orchestra for each performance, which will be priced at £5 off the ticket prices above. Subject to availability.

VENUE Factory Theatre
(Reserved Seating)

IMAGE: GRAPHIC DESIGN: DANI MAYES
AND DAN HARKER / PHOTO BY MATTHEW
WILLIAMS-ELIS



"A TREMENDOUS MUSICAL TREAT."

WhatsOnStage on *Madam Butterfly*



**"I LEFT THE THEATRE REELING
FROM THE EXPERIENCE...
A REMARKABLY STRONG CAST"**

The Guardian on *Eugene Onegin*



THE EDGE

TRANSPORT & NEW WOLSEY THEATRE

Devised and Directed by Douglas Rintoul

Award-winning theatre company Transport come to Tobacco Factory Theatres for the first time, with a sea saga for the 21st Century.

A woman steps into the English Channel. Five thousand miles away in West Bengal a man is swept up by a great storm surge. Two decades later their children meet on a beach by an English town that's been abandoned to the sea. She's training to swim the Channel. He's a climate change refugee.

Set in the near future, *The Edge* takes us on a touching and fantastical journey through weather, time and friendship exploring the mythical place where the land meets the sea, posing vital questions about our future in a rapidly changing environment.

The Edge was made by the creative team behind the Off West End Award-nominated *1001 Nights* (Unicorn Theatre and Tour) and winner of a Royal National Theatre Foundation Playwright's Award - *Elegy*. *The Edge* brings together text, movement, projection and original music in a production which is poetic, funny, magical, moving and human.

IMAGE: DANIELLE KIEMEL, MOMENT OPEN COLLECTION, GETTY IMAGES

RUNNING TIME 1hr 20mins

AGE RECOMMENDATION 14+

TICKETS Full £13 / Concession £9

VENUE Factory Theatre (Reserved Seating)

A pre-theatre dinner ticket for the ground floor TF café bar is available (P42)

★★★★ "Ingeniously told... an utter delight" *The Telegraph* on *1001 Nights*

★★★★ "Touching and compelling... something that everyone should experience" *WhatsOnStage* on *Elegy*

"Powerful, smart and smartly acted" *The Guardian* on *Invisible*



CHAOS

LORDS OF STRUT

We're excited to welcome the fame obsessed and socially impaired Lords of Strut to Tobacco Factory Theatres as part of Circus City, Bristol's brand new circus festival.

Join Ireland's most emotional dancers as they share their 'bullet proof' secret to life and happiness! Lords of Strut have previously packed out theatres at the Edinburgh Festival Fringe and in Cork, Dublin and Australia.

Chaos is a motivational, semi-nude, breathtakingly funny show. Watch Sean and Seamus hold it together as they dance and bicker through an hour of physical and "meta-physical" comedy.

If you haven't seen them before, you're in for a treat!

CIRCUS CITY

Circus City is a brand new festival for Bristol which will have something for everyone as it mixes circus with dance, theatre, comedy and puppetry. Featuring home-grown talent and award-winning European shows, the month long citywide programme celebrates Bristol's vibrant circus scene.

For the full line-up and to sign up to the Circus City mailing list visit bristolcircuscity.com

RUNNING TIME 1hr

AGE RECOMMENDATION 7+

TICKETS

Full £12 / Concession £8

Family ticket £34*

*2 adults & 2 children or 1 adult & 3 children

VENUE Factory Theatre (Reserved Seating)

★★★★★ "a hilarious performance" *Three Weeks Edinburgh*

★★★★ "...outrageous costumes, merciless melodrama... Laughs come easily" *Broadway Baby, Edinburgh*

★★★★ "an hour of belly laughs" *The Irish Times*

IMAGE: CONOR BUCKLEY - PIQUANT MEDIA

This season, we're proud to present three fascinating, authentic one-woman shows, for three nights each, exploring the identities of different young women in contemporary society. See each show individually or all three for £24 (Concession £15)

Thu 29 – Sat 31 October 8.15pm



VANITY BITES BACK

HELEN DUFF

A bold, subversive and very funny clown-cookery show about searching for self-worth in a cheesecake.

Join aspiring TV cookery host Jill – described as a cross between Alan Partridge and Margaret Thatcher – for her most exposing episode to date. Nominated for a Fringe First Award, *Vanity Bites Back* delves into the complexities of mental illness and bites back at the silence and stigma surrounding anorexia.

Brave, fresh and empowering, *Vanity Bites Back* is the solo debut from comedian and performer Helen Duff.

★★★★ "A bold way of tackling a taboo subject... which could spoil in so many ways. With Duff's skill in the kitchen, it never does." *Broadway Baby*

★★★★ "fresh, quick-witted and supremely empowered" *The Scotsman*

IMAGE: SOPHIE ANSELL

RUNNING TIME 1hr

AGE RECOMMENDATION 12+

TICKETS Full £12 / Concession £8

VENUE Brewery Theatre

Mon 02 – Wed 04 November 8.15pm



AND NOW: THE WORLD!

OPENWORKS THEATRE AND COMPANY OF ANGELS IN ASSOCIATION WITH DERBY THEATRE

Written by Sibylle Berg / Translated by Ben Knight
Dramaturgy by Clara Brennan / Directed by Abigail Graham

The startling new English language première of an award-winning German play.

We want to be supermodels or get on TV, because otherwise we'll just sit at our computers anonymously hating each other.

And Now: The World! is about being young in a digital world; about being a superhero caught in a web; about being able to spend more time with your friends online than face to face. If your whole life is online, can you start a revolution and stay #ontrend?

The darkly comic *And Now: The World!* was awarded Theater Heaute's German Play of The Year Award. Martin Crimp won its foreign language counterpart and OpenWorks are thrilled to have the rights to the British première of this unusual, arresting new play.

★★★★ "this production... has a passionate intensity that holds its audience spellbound."

British Theatre Guide on Debris directed by Abigail Graham

★★★★★ "Abigail Graham's astonishingly well-acted and quietly devastating revival."

The Independent on Molly Sweeney directed by Abigail Graham

RUNNING TIME 1hr

AGE RECOMMENDATION 14+

TICKETS Full £12 / Concession £8

VENUE Brewery Theatre

Thu 05 - Sat 07 November 8.15pm



PORTRAIT

FUEL PRESENTS RACHEAL OFORI

We're privileged to present the debut solo show from writer, performer and emerging talent Racheal Ofori, inspired by her own experiences.

A frank and funny look at the trials and tribulations of modern existence, seen through the eyes of a young black woman. Candid and satirical, this one-woman show uses music, poetry and dance to challenge cultural stereotypes, explore identity and role models and ask the critical question: just how do you navigate today's world?

Portrait is Racheal's first solo show and is inspired by her own experiences. She first presented the show at Camden People's Theatre as part of *Calm Down, Dear Festival* in 2013 before a run at the Edinburgh Festival Fringe 2015 and a UK tour.

IMAGE: TOM MEDWELL

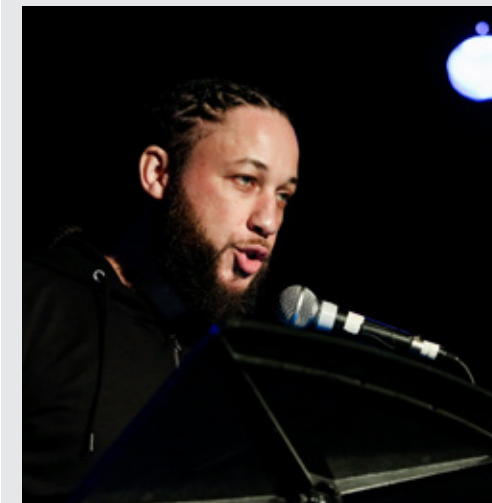
RUNNING TIME 1hr

AGE RECOMMENDATION 12+

TICKETS Full £12 / Concession £8

VENUE Brewery Theatre

Sun 25 October 6pm



PROTOTYPE: EXPERIMENTS IN THEATRE

TOBACCO FACTORY THEATRES

Prototype nights are for both artists and audiences.

For artists they're the chance to share new ideas for performance with an engaged and supportive audience and see if they've got legs.

For audiences it's an opportunity to see and respond to what's being made right here, right now, and to contribute to an essential stage in the process of making new work. Join us to see for yourself.

TICKETS £3

VENUE Brewery Theatre

ARE YOU AN ARTIST INTERESTED IN BEING PART OF PROTOTYPE?

If you've got an idea for a new show burning a hole in your pocket, get in touch to find out how to try something out at *Prototype*.

Email jojo@tobaccofactorytheatres.com or call 0117 902 0345.

JANE WENHAM: THE WITCH OF WALKERN

BY REBECCA LENKIEWICZ

OUT OF JOINT, WATFORD PALACE THEATRE
AND ARCOLA THEATRE IN ASSOCIATION
WITH EASTERN ANGLES

**A gripping and haunting new play about sex, fear,
religion and magic, from the BAFTA-winning writer,
Rebecca Lenkiewicz.**

After decades free from witch hunts, Walkern's cunning woman Jane Wenham is blamed for a tragic death – and charged with witchcraft. A terrifying ordeal begins, as the village is torn between those who want to save her life, and those who claim to want to save her soul.

Inspired by events in a Hertfordshire village, this beautiful, throat-catching new play is alive with the mysteries of nature, sex and the supernatural, and blasts society's hunger to find – and create – witches.

Rebecca Lenkiewicz won a 2015 BAFTA for co-writing *Ida*, which also won the Oscar for Best Foreign Film. She won a Fringe First for her play *Soho: A Tale of Table Dancers*, and her plays *The Night Season* and *Her Naked Skin* both premiered at the National Theatre.

Following *Ciphers* in 2013, we're delighted to see *Out of Joint* back at Tobacco Factory Theatres this autumn.

IMAGE: RICHARD LAKOS / REBECCA PITT


AGE RECOMMENDATION 14+

TICKETS

Full £14 / Concession £10
(no concession Fri or Sat eve)

BC (P41)

VENUE Factory Theatre
(Reserved Seating)

**BSL INTERPRETED
PERFORMANCE** 

Thu 05 November 8pm
tickets@tobaccofactorytheatres.com

Post Show Talk

Please join us after the
performance on Tuesday for a free
post-show discussion.



**"BRILLIANT.
IT WRENCHES THE GUT AND
MAKES THE SOUL SING."**

The Times on *Out of Joint* and Arcola Theatre's
Crouch Touch Pause Engage



**"A DEEPLY AFFECTING
AND ROUSING DRAMA"**

The Independent on Rebecca Lenkiewicz's
Her Naked Skin

**"OUT OF JOINT –
A MUST-SEE COMPANY"**

Time Out



EVENTIDE

UP IN ARMS AND ARCOLA THEATRE IN ASSOCIATION WITH THE NORTH WALL

Written by Barney Norris
Directed by Alice Hamilton

Following his acclaimed debut *Visitors*, *Eventide* is a brand new play by award-winning writer Barney Norris.

Try and do something with your life. Be deliberate, you know?

A love song, an elegy, a celebration - *Eventide* tells the story of three people whose worlds are disappearing. John is a landlord forced to sell up; Liz is a church organist who can't get a gig; Mark takes what work he can just to pay the rent. Their tales unfold around the back of a pub hidden deep in the heart of the Hampshire countryside.

But is that heart still beating?

Eventide is the latest collaboration between director Alice Hamilton and writer Barney Norris, winner of the 2014 Critics' Circle and Off West End Most Promising Playwright Awards. Following the success of *Visitors*, Norris' debut play, *Up In Arms* now tour to Bristol for the first time.

RUNNING TIME 1hr 40mins (inc. interval)

AGE RECOMMENDATION 14+

TICKETS Full £13 / Concession £9
(no concession Fri or Sat eve)

VENUE Brewery Theatre

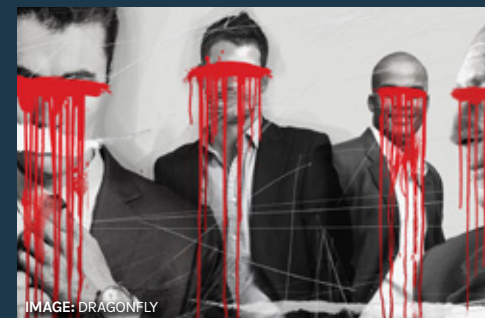
★★★★★ "Outstanding... a beautiful piece of work" *The Times on Visitors*

★★★★★ "A stunning, stirring production" *Time Out on Visitors*

★★★★★ "Beautifully judged" *The Stage on Visitors*

★★★★ "Infinitely touching" *The Guardian on Visitors*

IMAGE: CHARLIE YOUNG



MEN IN THE CITIES

CHRIS GOODE & COMPANY WITH ROYAL COURT THEATRE

Written and performed by Chris Goode / Directed by Wendy Hubbard / Designed by Naomi Dawson
Lighting Design by Katharine Williams

An incendiary piece of experimental storytelling from Chris Goode, writer of *Monkey Bars* and our 2014 production of *Infinite Lives*.

Framed by two violent deaths – the apparently inexplicable suicide of a young gay man, and the murder of Drummer Lee Rigby outside the Royal Artillery Barracks in Woolwich in May 2013 – *Men in the Cities* is a compelling piece about harm and complicity, and about the forces that shape our relationships.

Through fractured snapshots of seemingly disconnected lives, *Men in the Cities* presents a challenging but radically humane portrait of how we live now.

★★★★★ "a smeared, soulful, messy, impassioned rant that has moments of such staggering potency that it feels like the air is on fire" *Time Out*

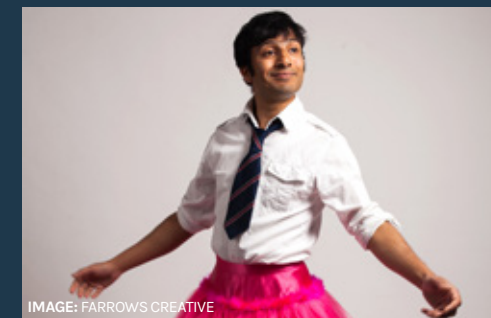
"an important, zeitgeist-pricking piece from one of the UK's most interesting theatre-makers" *The Independent*

RUNNING TIME 1hr 25mins

AGE RECOMMENDATION 16+

TICKETS Full £13 / Concession £9

VENUE Factory Theatre (Reserved Seating)



STRICTLY BALTI

TRAVELLING LIGHT

Bristol's charismatic Saikat Ahamed (*101 Dalmatians*, *The Tiger and the Moustache*) returns to Tobacco Factory Theatres with *Strictly Balti* after sell-out performances in 2014.

We thought dance class was good, we thought dance class was English. We were wrong. Now we see you are fully English, because you argue with your parents. In Bangladesh this wouldn't happen. Well you've done what we never could. You've left Bangladesh behind.

Join Saikat as he dances precariously through his dual-identity childhood, torn between the familiar sights of Birmingham and the mysteries of Bangladesh. This is a show for anyone who ever had to grow up, a show about being a second generation immigrant in the UK but feeling like an Englishman abroad.

"A thought-provoking delight, with comedy and poignancy aplenty" *Guide to Bristol*

"This is storytelling at its best. Never sentimental, sometimes explosive." *StageTalk Magazine*

Post Show Talk

Please join us after either performance for a free post show discussion.

RUNNING TIME 1hr

AGE RECOMMENDATION 11+

TICKETS Full £12 / Concession £8

VENUE Brewery Theatre

OUTSIDERS

PILOT THEATRE

Written by Emteaz Hussain
Directed by Fraser Corfield

A compelling re-imagining of Camus' novel *L'Étranger*.

Marie was there, she saw it all happen. She was witness. In court she looked across the room to meet her boyfriend's gaze – but he looked straight through her – his eyes seemed unfocused, distant. She remembered his soft touch, his smile and his stories. She remembered these from the time before he aimed the gun. Before the four shots rang out and the man fell to the ground. She was there. Marie saw it all happen. And at home there sat a sister waiting for her brother to return.

Pilot Theatre are a mid-scale touring theatre company based at York Theatre Royal. Their new production, *Outsiders*, is written by acclaimed writer Emteaz Hussain (*Blood*). It tells the stories of two women, Marie Cardona and Sumaya Nuradin, exploring what it means to feel different from others. We're very pleased to welcome Pilot to Bristol for the first time.

RUNNING TIME Approx. 1hr

AGE RECOMMENDATION 13+

TICKETS

Full £14 / Concession £10
(no concession Fri or Sat eve)
Tue All tickets £10

VENUE Brewery Theatre

★★★★★ "Exciting and electrifying theatre" *The Big Issue on Pilot's Antigone*

★★★★ "A superb example of freewheeling storytelling... A brilliant piece of new writing." *The Arts Desk on Emteaz Hussain's Blood*.

IMAGE: DANIELLE DORIGO & ELVIRA LEONE



ARTHUR'S DREAM BOAT

LONG NOSE PUPPETS

A magical, playful children's show with breathtaking puppets; so enchanting that everyone will want to sail away with Arthur in his dream boat!

This is the story about a little boy who has a dream.

One night, Arthur has an amazing dream about a beautiful pink and green boat with a stripy mast. He can't wait to tell everyone about it but no one (not even his dog!) is interested. In fact, they don't even notice that this very same boat is growing on his head, getting larger and larger by the minute! Soon, Arthur is bouncing along the waves in his very own dream boat. Maybe now his family will listen to him!

This gorgeous, colourful and captivating new show is brought to you by Long Nose Puppets, makers of *Shoe Baby* and *Penguin*, with music by Tom Gray, of the Mercury Award-winning band Gomez and co-composer of Cbeebies' *Tilly and Friends*.

RUNNING TIME 50mins

AGE RECOMMENDATION
Ages 3 – 8 and their families

TICKETS £7

VENUE Brewery Theatre
(Reserved Seating)

"The innocence, wonder, magic and joy that exuded from this puppet show was awesome and inspiring." *365 Bristol*

"The music was absolutely fantastic and the sets and puppeteering spot on." *The Guardian on Shoe Baby*

"Possibly the best children's show I have ever seen." *Polly Stauss, a mum on Shoe Baby*

THE LIGHT PRINCESS

TOBACCO FACTORY THEATRES
IN ASSOCIATION WITH PEEPOLYKUS

Hot on the heels of our exceptionally well-received *101 Dalmatians* last year, *The Light Princess* is Tobacco Factory Theatres's latest creation for Christmas, inspired by George MacDonald's beautiful original fairy tale.

In a kingdom far away, lives an extraordinary princess; a princess strikingly different to any you'll have ever heard of. Strikingly different, in fact, to anyone who has ever lived. Because, you see, she has no gravity.

Now you might be thinking, what fun - to fly and float and bound around weightless in the air! But of course, it's not as simple as that. Her windows are forever closed, she can't run free and forever light-hearted; she can never take anything or anyone seriously. Especially not the prince who falls in love with her...

We can't wait to bring this startling, bewitching fairy tale to life using a beautiful immersive set design, theatrical magic, original music and a lot of love. George MacDonald's story will be adapted for the stage by Thomas Eccleshare (*Dancing Brick and Helen*) and Director John Nicholson (*Peepolykus* and *Santa's Little Trolls*), with music from the divine Verity Standen (*Mmm Hmmm, Hug*) and set design by Phil Eddolls (*Dracula*).

Join us this Christmas as we transform the Factory Theatre, like you've never seen it before, to tell the incredible story of the princess who just can't keep her feet on the ground.

RUNNING TIME Approx. 2hrs (inc. interval)

AGE RECOMMENDATION 6+

TICKETS

Thu 26 November – Wed 02 December
Previews All tickets £8


Thu 03 – Fri 18 December;
Thu 07 & Fri 08 January Full £15 /
Concession £11 / Family Ticket* £45

Sat 19 December – Sun 03 January;
Sat 09 & Sun 10 January Full £19 /
Concession £15 / Family Ticket* £60

*2 adults & 2 children or 1 adult & 3 children

BC (P4)

VENUE Factory Theatre (Reserved Seating)

BSL INTERPRETED PERFORMANCE 
Fri 11 December 7.30pm
tickets@tobaccofactorytheatres.com

Production Sponsor



Is proud to support
Tobacco Factory Theatres
as it stages this production.

IMAGE: FARROWS CREATIVE



**"A FUNNY, HEARTWARMING, BEAUTIFUL
PIECE OF STAGE CRAFT"**

The Independent on *Cinderella: A Fairytale*



**"FULL OF WIT AND
INVENTION, HAS A RETRO
VIBE AND OFFERS MADCAP
ADVENTURE THAT IS FULL OF
JOIE DE VIVRE."**

The Guardian on *101 Dalmatians*



**"INVENTIVE, INVIGORATING
AND AMUSING... IT'S CLEAR
AND IT'S CAPTIVATING."**

The Times on *101 Dalmatians*



KID CARPET'S

NOISY NATIVITY

Bristol's much-loved Kid Carpet gives the traditional Christmas story a radical remix with big beat songs, wonky carols, live special effects, puppetry and animation.

Kid Carpet is putting on the local Christmas Nativity show, but no one has turned up to audition. Ay Caramba! Never fear, The Noisy Animals are next door at band practice and say they can help out. However, they want total control and have some really BIG demands. What could possibly go wrong...?

A ridiculous Christmas journey of silliness and mischief for the whole family. Will the Christmas story ever be the same again and more importantly, where can we get 6 million silk tinsel headbands, 150 anti-gravity snowballs, and 4 supersonic space reindeer?

Ed Patrick (aka Kid Carpet), is a Bristol-based maker of nonsense music and rock'n'roll theatre shows. *Noisy Nativity* is the third installment of the Noisy Animals adventure; they've had a dance contest, they've been to space, now it's time for rock bedlam in Bethlehem.

IMAGE: ED PATRICK

RUNNING TIME 50mins

AGE RECOMMENDATION 3+

TICKETS


Wed 02 – Sat 06 December
Previews All tickets £6

Wed 09 – Fri 18 December; Sat 02 & Sun 03 January All tickets £8
Family ticket* £25

Sat 19 – Wed 30 December All tickets £10 / Family ticket* £30
*2 adults & 2 children or 1 adult & 3 children

VENUE Brewery Theatre (Reserved Seating)

BSL INTERPRETED PERFORMANCE

Thu 10 December 11am 
tickets@tobaccofactorytheatres.com

"I defy anyone of any age not to be up and grooving to Kid Carpet and the Noisy Animals. Just go see it!" *Guide to Bristol on Kid Carpet and the Noisy Animals*

"The utterly, utterly, utterly brilliant Kid Carpet" *This Week, London*



LIVING SPIT'S

A CHRISTMAS CAROL

Christmas is coming,
The Goose is panicking,
And Living Spit are back
To start your Christmas with a zing!

Hard-hearted Ebenezer Scrooge hates the season of goodwill. Until a visit from three Phantoms one memorable Christmas Eve makes him rethink his miserly ways and turn his wicked life upside down... blah blah blah.

We all know the story. We've all seen the film(s). But who's the best Scrooge of all time? Albert Finney? Alistair Sim? Patrick Stewart?

Well, just hold your horses there, Sir/Madam! Because you've yet to witness the actor Howard Coggins's unique take on the eponymous anti-hero of Dickens' festive masterpiece.

Like a coiled spring he waits in the wings, ready to take up the mantle and give the performance of his career as the mean miserabilist, Ebenezer Scrooge. And he's brought Stu Mcloughlin along for the ride to dress up, sing, dance and generally act like a complete idiot whilst playing ALL the other parts.

With silly songs, pitiful puppetry and more Dickensian daftness than you can shake a selection box at - a feast of festive foolery!

RUNNING TIME Approx. 1hr 10mins

AGE RECOMMENDATION 14+

TICKETS

Tue 08 – Thu 17 December
Full £13 / Concession £9

Sat 19 December – Sun 03 January
All tickets £13

BC (P41)

VENUE Brewery Theatre

★★★★ "A glorious celebration of silliness, fully appreciated by a packed home crowd." *The Stage on Elizabeth I: Virgin on the Ridiculous*

"A storming, surprising and sassy night out. Cracking storytelling." *Kneehigh's Emma Rice on The Six Wives of Henry VIII*

"Both actors perform with bounds of enthusiasm, wit and skill...outstanding." *The Post on The Six Wives of Henry VIII*

IMAGE: PHOTOS - PAUL BLAKEMORE /
IMAGE - COE CREATIVE

Sun 04 October 8pm



SIMON MUNNERY
AND NOTHING BUT
THE COMEDY BOX

Multi award-winning comedian Simon Munnery offers up a new stand-up show, as he returns once again to what he does best, being himself for an hour. He will generally tell it like it is, was, and might be, if we could but get our fingers out! All rise.

Simon is a British Comedy Award-nominee, Perrier Award-nominee and Chortle Award-winner. He's a star of Comedy Central's *Alternative Comedy Experience* - as seen on BBC2's *Culture Show* and heard on Radio 4's *The News Quiz*, amongst others.

★★★★ "If stars were given for innovation, Simon Munnery would be taking home the full constellation. The God particle of *Alternative Comedy*" *Chortle*

"Convention-defying, innovative stuff. Munnery is a must see" *The Times*

★★★★ "He might not be a household name, but Simon Munnery is an avant-garde comedy god" *Time Out*

AGE RECOMMENDATION 16+

TICKETS All tickets £12.50

VENUE Factory Theatre

Sun 25 October 8pm



ROB BECKETT
MOUTH OF THE SOUTH
THE COMEDY BOX

Rob Beckett's back with a brand-new show of funnies and he's taking on the big issues like Kit Kats and flatbread!

Rob Beckett burst onto the comedy circuit only five years ago but within his first year he had won four new act competitions.

After quickly establishing himself on the circuit, Rob's cheeky chappy persona saw him winning fans starring on BBC1's *Live At The Apollo*, *Would I Lie To You*, Channel 4's *8 Out Of 10 Cats*, BBC2's *Mock The Week*, ITV2's *Celebrity Juice* as well as his role as resident comedian in the jungle each year on *I'm A Celebrity... Get Me Out Of Here!* NOW!

Rob's debut tour, which finished in spring 2014, saw him playing to sell-out venues all over the UK with extra dates added due to demand.

"unshowy, unpretentious but thoroughly funny shtick" *The Guardian*

"A revelation" *The Scotsman*

AGE RECOMMENDATION 16+

TICKETS All tickets £15.50

VENUE Factory Theatre

Sun 08 November 8pm



JEREMY HARDY
THE COMEDY BOX

Jeremy Hardy begins his 4th decade as a stand-up this year. That's a more dramatic way of saying he started 31 years ago and, without a lottery win, probably has at least another 31 years to go.

Last year, the tenth series of *Jeremy Hardy Speaks to the Nation* was broadcast on Radio 4. He is also well known for his appearances on *The News Quiz* and *I'm Sorry I Haven't a Clue*. Indeed, Alan Bennett recently said he likes him "but he's only on the radio".

However, Jeremy isn't only on the radio. He is on the road all year round and has never stopped doing live shows since 1984. After briefly hibernating in the winter, he's back out on the road in 2015.

"In an ideal world, Jeremy Hardy would be extremely famous, but an ideal world would leave him without most of his best material."

The Guardian

AGE RECOMMENDATION 16+

TICKETS All tickets £15.50
Unemployment Benefit Claimants £5.25 (limited availability)

VENUE Factory Theatre

Sun 15 November 8pm



STEPHEN K AMOS
THE LAUGHTER MASTER
THE COMEDY BOX

Stephen K Amos, the maestro of feel-good comedy is back on tour with his new show.

Fresh from touring UK and Australia. Star of *Life: An Idiot's Guide* and Radio 4's *What Does the K Stand For?*

"It was all fabulous. But it was when riffing with the audience that Amos truly excelled. With a packed venue ready on his side, Amos drew people into his routines; his finely honed sensibility turned innocent remarks into comedy gold" *Herald Sun*

★★★★ "Unashamed feel-good entertainment." *Evening Standard*

★★★★★ "A note-perfect hour." *Metro*

"Amos is officially becoming a national treasure. Expect more warm insight and spiky charm here" *The Sunday Times*

AGE RECOMMENDATION 16+

TICKETS All tickets £17.50

VENUE Factory Theatre

We regularly host shows and events by emerging artists, local community, education and amateur groups that we are proud to support. We also make the theatre available once per season for fundraising nights for locally based charitable organisations.

Mon 07 September 7.30pm



THE WARDROBE THEATRE'S GREATEST HITS

A spectacular one-off fundraising event in aid of Wardrobe Theatre's move to Old Market.

For over 4 years The Wardrobe Theatre has been providing Bristol with a thrilling mix of locally created theatre, comedy and exciting, unique events.

This autumn the theatre is moving to new premises in Old Market and all proceeds from this special evening of theatre, comedy, puppetry, dance, poetry, improv and cabaret will go towards the fundraising campaign.

Find out more at helpbuildthenewwardrobetheatre.com

TICKETS Full £12 / Concession £10 inc. raffle entry

VENUE Factory Theatre

Mon 05 October 7pm



5X15

We are excited to host the launch of the hit event series 5x15 in Bristol.

5 speakers. 15 minutes each. No scripts. True stories of passion, obsession and adventure for the incurably curious. Past speakers have included Werner Herzog, Salman Rushdie, Immodesty Blaize and Grayson Perry.

Line-up and further details to be announced on our website.

"It's a neat idea. And boy do they deliver." *The Times*

"With a friendly crowd and busy bar, 5x15 events are more salon - with a touch of saloon after the last speaker - rather than anything as staid as a college lecture." *The New York Times*

TICKETS Full £10 / Students £8

VENUE Factory Theatre (Reserved Seating)

Mon 09 - Thu 12 November;
Mon 16 - Wed 18 November 7pm



SHAKESPEARE SCHOOLS FESTIVAL

Tobacco Factory Theatres is thrilled to welcome local talent to the stage as part of the Shakespeare Schools Festival.

Each night three schools will perform three different Shakespeare plays. You will see Shakespeare performed as you've never seen it before!

The Shakespeare Schools Festival is the UK's largest youth drama festival and enables over 1,000 primary, secondary, and special schools to stage abridged Shakespeare productions in their local professional theatre.

Details of performing schools will be on our website soon.

"What a fantastic evening! Lots of amazing new talent in our community. Enjoyed every minute of it!" *Audience Member, 2014*

RUNNING TIME 2hrs 15 mins (inc. interval)

TICKETS Full £9 / Concession £7

VENUE Factory Theatre (Reserved Seating)

THE SHAKESPEARE SEASON

SHAKESPEARE AT THE TOBACCO FACTORY AND TOBACCO FACTORY THEATRES

Shakespeare at the Tobacco Factory and Tobacco Factory Theatres are delighted to co-produce the annual season of Shakespeare and classic drama.

The season will be on sale on the following dates:

Tobacco Factory Theatres Members Priority Booking opens Wed 16 September 10am

Shakespeare at the Tobacco Factory Friends Priority Booking opens Wed 23 September 10am

Public Booking opens Wed 30 September 10am

Main run Thu 11 February - Sat 26 March 2016

In repertoire with *All's Well That Ends Well*

Mon 25 - Wed 27 April; Sat 30 April 2016

(See tobaccofactorytheatres.com for details)



Dorothea Myer-Bennett in *Richard III*
IMAGE: Mark Douet

HAMLET

BY WILLIAM SHAKESPEARE

Directed by Andrew Hilton

The most famous play in world drama, *Hamlet* turns a new face to every decade. So many elements - realpolitik, madness, sex, murder - all brought together in a drama that is both a thriller and the profoundest meditation on our human condition.

"Thrilling work" *The Guardian on Romeo and Juliet*

"Bullseye" *WhatsOnStage on Romeo and Juliet*

TICKETS

Previews Thu 11 - Mon 15 February £16

Mon & Tue 7.30pm (Tue 16 7pm) £19

Wed & Thu 7.30pm £21

Thu 25 Feb; 03 & 10 March 2pm Full £18 / Schools & Under 15s £12

Sat 2pm Full £18 / Schools & Under 15s £12

Fri & Sat 7.30pm £24

VENUE Factory Theatre (Reserved Seating)

Main run Thu 31 March - Sat 23 April

In repertoire with *Hamlet*;

Thu 28 - Sat 30 April

(See tobaccofactorytheatres.com for details)



Benjamin Whitrow and Julia Hills in *The School For Scandal*.
IMAGE: Mark Douet

ALL'S WELL THAT ENDS WELL

BY WILLIAM SHAKESPEARE

Directed by Andrew Hilton

A young woman, using skills bequeathed by her father, saves the French King's life and is rewarded with the right to choose her own husband. But what if the chosen one won't play the game? How can she get him into bed? How can she make him love her?

★★★★ "three hours plus of perfectly-pitched satire, played by an ensemble of actors who never put a foot wrong... There is something approaching real magic here." *The Arts Desk on The School for Scandal*

TICKETS

Previews Thu 31 March - Mon 04 April £16

Mon & Tue 7.30pm (Tue 05 7pm) £19

Wed & Thu 7.30pm £21

Thu 14 & 28 April 2pm Full £18 / Schools & Under 15s £12

Sat 2pm Full £18 / Schools & Under 15s £12

Fri & Sat 7.30pm £24

VENUE Factory Theatre (Reserved Seating)



Our CYP programme has so much to offer this season! From **Young Theatre Makers**, our new youth theatre for 14-19 year olds, to opportunities for 10-13 year olds to engage with us through **Take It On**. Schools can work with us too; don't miss our production-related workshops and **Ignition**. And we're continuing our sessions for home educated young people. There's so much to do - make sure you're a part of it!

FOR SCHOOLS

Ignition

Is devising dragging you down? Need a spark of inspiration to light the way? Look no further! We're here to support you and your exam groups, providing stimulus, motivation and a place to perform.

Signing up to **Ignition** will include tickets to a show, a Q&A with the cast, workshops in your school and a performance slot in our Brewery Theatre.

AGE RECOMMENDATION KS4/5

COST £37 per student

DEADLINE TO APPLY Fri 04 September

Up In The Air

Enjoy an exclusive pre-show workshop in your school, linked with our Christmas show *The Light Princess*. **Up in the Air** includes:

- Exclusive 90 minute in-school workshop for up to 30 participants which explores the story, themes and characters
- Resource pack with production insights, cast interviews and follow-up activities

AGE RECOMMENDATION KS1/2/3

COST £140 (for up to 30 participants)

Tour and Talks

Want to learn more about how a theatre works? Book now for one of our monthly **Tour and Talks** and experience the hidden side of theatre. Explore behind-the-scenes before you meet with marketing,

parley with a producer or test a technician during an exclusive Q&A with theatre staff. Get in touch to book your visit.

Bristol & Bath Theatre Educators Consortium

Tobacco Factory Theatres, Travelling Light, Bristol Old Vic and the egg (Theatre Royal, Bath) aim to support and enhance formal education provision of drama in Bristol and Bath. There are two events this season.

Theatre Industry Day

Spend the day in the historic Bristol Old Vic and learn about all the many departments that make a theatre tick. Get in touch to find out more.

DATES Mon 09 November 9.15am - 1pm

AGE RECOMMENDATION KS4/5

COST Free

VENUE Bristol Old Vic

CPD Devising Workshop For Teachers

Work with acclaimed actor Saikat Ahamed exploring devising and how to inspire your students. Get in touch to find out more.

DATES Mon 09 November 5pm - 6.30pm

COST Free

VENUE Brewery Theatre

For more information on any of the activities for schools and to book, email bryony@tobaccofactorytheatres.com **or call** 0117 963 0934.



FOR YOUNG PEOPLE

Young Theatre Makers (YTM 14:19)

Do you love theatre? Are you keen to improve your performance skills but also want to learn about everything else that makes theatre happen? Then **Young Theatre Makers** is for you. Join us and build your confidence, develop your performance skills and explore how to take a show from an idea to a performance.

EVERY THURSDAY 6pm - 7.30pm for 10 weeks, excluding half-term (starting Thu 24 September)

AGE RECOMMENDATION 14-19 years

COST £50 per term

(Need help with this fee? Please get in touch)

VENUE Factory Studio

Take It On

Join us every month to learn a specialist skill here at Tobacco Factory Theatres.

DATES First Monday of every month 4.15pm - 5.45pm (starting Mon 05 October)

Mon 05 October Calling all comedians!

Mon 02 November Stage Combat Skills

Mon 07 December Run Away to the Circus!

AGE RECOMMENDATION 10-13 years

COST £3 per session (limited places)

VENUE Factory Studio

To book for events for young people, go to tobaccofactorytheatres.com **or call** 0117 902 0344.

FOR HOME EDUCATORS

Exclusively for home educating families, this workshop will focus on confidence and performance skills. Parents welcome but attendance not necessary.

DATES Wed 16 September 10am - 11.45am (8-10 years)

COST £8.50

VENUE Tobacco Factory Theatres

Must be minimum of 8 participants for workshop to go ahead.

To book for events for home educated young people go to tobaccofactorytheatres.com **or call** 0117 902 0344.



OUR CYP PROGRAMME IS SUPPORTED BY:

Veronica Awdry Charitable Trust



Denman Charitable Trust
(Young Theatre Makers)

Nisbets in the Community
IOP Publishing (Take It On Sessions)

IMAGES: GRAHAM BURKE

As well as what appears in this brochure, there is lots more to tell you about what Tobacco Factory Theatres is up to at the moment. Find out a bit more on this page about some of the other things we're doing.

MAKING WORK IN BRISTOL AND ELSEWHERE

IN-HOUSE PRODUCTIONS

We are investing ambitiously in more of our own productions and co-productions with key partners. Our vision is to bring world class directors, actors, and musicians to Tobacco Factory Theatres – the best of the best – as well as to invest in developing the best new talent from here in Bristol and across the country.

We are proud of our growing track record of award-winning productions which include: *Cinderella: A Fairytale*, *Dracula*, *Infinite Lives*, *101 Dalmatians* and *Romeo and Juliet*.

You can read more about our productions this season which are *Living Quarters* (P10), *140 Million Miles* (P12), *Outpost* (P16), *Falstaff* (P18) and *The Light Princess* (P30). Plus, look ahead to our co-productions with SATTF of *Hamlet* and *All's Well That Ends Well* in early 2016 (P37).

Outpost



Last year we co-produced a new work, *Outpost*, with Green Ginger and Nordland Visual Theatre. Since its première in Norway in autumn 2014, *Outpost* has undertaken a European tour including the prestigious World Puppet Theatre Festival. This autumn it undertakes a UK tour including Tobacco Factory Theatres (P16).

A Play, a Pie and a Pint

Following the previous successes of *Faith Fall*, *Banksy: A Room in the Elephant* and *Helen*, we're delighted to collaborate once more with Óran Mór for two new plays in the *A Play a Pie and a Pint* series (P12).

Cinders at mac birmingham

Our Olivier-nominated, Offie Award-winning co-production of *Cinderella: A Fairytale* with Travelling Light will undertake its third transfer this Christmas, touring to mac birmingham.

OUTREACH

We will be working with Openworks to take *And Now the World!* to Bristol schools and community venues.

ARTIST DEVELOPMENT FUND

As part of our commitment to artist development and the future generation of theatre makers, we have created a significant commissioning fund for directors and companies. This season, support from the Artist Development Fund has been given towards the development of FellSwoop Theatre's *Ghost Opera* (P13).

Rathbones

Look forward

is proud to support the Artist Development Fund

GIVING BACK

We aim to regularly give one night in one of our theatres free of charge to a local charity or emerging company for fundraising or other purposes. This season, we're pleased to support the Wardrobe Theatre as they raise funds to move their incredibly successful, vital theatre from The White Bear pub on St Michael's Hill into new, bigger premises (P36).

We also donated over 400 complimentary tickets to events last year to community groups and charities, a value of £5,000.

Box Office 0117 902 0344 Online tobaccofactorytheatres.com

Email enquiries tickets@tobaccofactorytheatres.com

No booking fees or card charges apply however you book

Box Office Opening Hours

10am – 6.30pm

Monday to Saturday (exc. Public holidays)

On days when performances are scheduled, the Box Office desk will be open until the start of the performance. If there is a show scheduled on a Sunday or public holiday, the Box Office desk will be staffed 2 hours prior to the performance and staff will be contactable by email, but the phone lines will not be open.

At certain times of the year e.g. summer or Christmas, our opening hours may vary. Please check the times on the website before you make a special trip.

Summer 2015 Opening Hours

As above but with changes on the dates below:

Mon 20 – Sat 25 July: 12 noon – 6.30pm

Mon 27 July – Sun 29 August: 10am – 4pm

Don't forget – you can book online anytime!

Posting Tickets

We can post out orders of up to 10 tickets, up to 5 days before the performance (excludes unreserved performances and tickets which require proof of ID). There is an admin fee of £1 per transaction. If you require posting of 10+ tickets, please contact the Box Office.

Payment

We accept all major credit and debit cards except American Express. We no longer have booking fees! No booking fee applies whether tickets are purchased in person, over the phone or online.

We cannot offer refunds, but tickets can be exchanged up to 48 hours before the show for another performance of the same production (subject to availability). An administration charge of £1 applies.

Seating

Shows with Reserved Seating will be listed as such on the show pages in this brochure. You can view all seating plans on our website. If the show is unreserved, please consider arriving well in advance.

Groups/Schools

For certain performances, for every ten tickets bought by a school or group, the eleventh is free.

Other group and school discounts may apply. Please ask the Box Office for further details.

Access

We are pleased to offer one free essential carer ticket for customers who require a carer to accompany them for the performance.

Both our theatres have tiered seating with only a certain number of seats on floor level. If you have any specific access requirements please contact the Box Office and we will be happy to discuss your visit in more detail.



Where possible we aim to BSL interpret certain productions each season. We reserve seats with a good view of the BSL interpreter, so please ask the Box Office where these seats are when you email tickets@tobaccofactorytheatres.com to book.

We also often provide relaxed performances to ensure a relaxed and welcoming atmosphere for individuals with additional needs.

Where they are available, BSL interpreted and Relaxed performances will be listed on show pages, the calendar in this brochure and on the Access page of the website.

Concessions

Concessions may be available for Children (16 and under), Over 60s, Registered Disabled, Equity members, Students and Unemployment Benefit Claimants.

Concessions are available at the discretion of the producing company, so may not be available for all productions. When collecting concessionary tickets, proof of concession must be provided.

Business Club Member 2 for 1 tickets

Where 2 for 1 tickets are available the **BC** symbol will be on the show page and calendar. Book early as this offer is subject to availability. To claim please quote your company promotion code over the phone or online. Please bring proof of the company you work for. See P44 to find out how to join our Business Club.

There are options for pre-show food and drink at Tobacco Factory Theatres, as well as from our friends at the Tobacco Factory Café Bar and Mark’s Café, and along North Street, on our doorstep.

FACTORY THEATRE BAR

Our Factory Theatre Bar is available for pre-show (from 1hr before the show), interval and post-show refreshments. Serving a lovely selection of locally-sourced drinks, snacks and cakes, come upstairs and relax before the performance.



Plus, if you’re looking for an alternative meeting space or a break from the office, our delightful theatre foyer is open during the day and offers light refreshments and free wifi.

FROM OUR FRIENDS

Mark’s Café at The Brewery Theatre



Mark’s Café opens 45 minutes before Brewery Theatre performances offering lovely drinks and snacks from local suppliers including tea, coffee, wine, beer and soft drinks.

Ground Floor Tobacco Factory Cafe Bar



Pre-show dining

A pre-theatre dinner ticket will be available when booking for *The Edge* (P20). The ticket includes a menu sent to you in advance, table service on arrival and your food delivered on time so you are not rushed before the performance. You can book alongside your tickets online or when you speak to the Box Office.

Coming to another performance?

Every evening there will be a quick dish available with a pound off for theatre ticket holders.

Our theatres are situated just south of the river in the heart of bustling Southville.

(NB Tickets for shows in both the Factory Theatre and the Brewery Theatre must be collected from the Box Office at Tobacco Factory Theatres)

Factory Theatre

Raleigh Road, Southville, Bristol, BS3 1TF

Brewery Theatre

291 North Street, Southville, Bristol, BS3 1JP



On Foot

We are just a 20 minute walk from the Centre (Arncliffe/MShed area) and a 35 minute walk from Bristol Temple Meads and Bedminster train stations.

By Bike

Both theatres are very accessible by bike from all areas of Bristol and there are bike racks inside the Tobacco Factory, on the wall of the Tobacco Factory on the corner of Raleigh Road and North Street and outside the Brewery Theatre.

By Bus

Bus number 24 from North Bristol, Broadmead, the City Centre and Redcliffe Hill stops outside the Tobacco Factory. Currently the last bus leaves at 10.43pm Monday – Sunday from outside Aldi.

Parking

Parking is available in the local area surrounding the theatre but please be aware of restrictions. If you would like further information please call the Box Office on 0117 902 0344.

USING OUR SPACES

Alongside our extensive theatre programme, we have a variety of multi-purpose spaces which are available to hire during the day, evenings and at weekends.

The **Factory Meeting Room**, **Factory Studio** and the **Brewery Studio** currently host a variety of events, classes and meetings throughout the year and we strive to make the spaces accessible to a wide range of clients.

Whether you’re looking for a meeting room, a studio space or a place to rehearse, Tobacco Factory Theatres can provide the ideal setting at an affordable price.

For more information or to enquire about availability contact Becci Snape on 0117 902 0345 or email theatre@tobaccofactorytheatres.com



"Tobacco Factory Theatres works wonders with little money; with more investment it would perform miracles" Susannah Clapp, The Observer & BBC Radio 3

In the last year Tobacco Factory Theatres welcomed over 140,000 people to more than 600 performances, classes, talks, workshops and other events in our venues. A further 22,866 people engaged with us through national and international touring. To do this costs about £2.2m a year and we are proud to earn 76% of our income, with 58% coming directly from ticket sales and 3% from Arts Council England support.

As a registered charity, we could not do the work we do without the generous support of grant making trusts, our business partners and our members.

Support Tobacco Factory Theatres so that we can:

- Continue to programme world class companies and performance.
- Continue building Bristol's reputation as a hub for great art and culture.
- Keep the brightest young directors, actors, musicians and playwrights in Bristol and support their growth into the next great generation.
- Expand our outreach work into the local communities to provide enrichment and opportunities for children and young people.

To find out more about how a little help can go a long way and help us to secure a great future then please contact us on **0117 963 0949** or **development@tobaccofactorytheatres.com**

Join as a Member

Be part of the fantastic group of members who are helping us to create incredible theatre in Bristol.

Benefits of joining range from priority booking on all shows to invitations to exclusive member-only events.

- Friend £4 P/M**
- Champion £10 P/M**
- Patron £20 P/M**
- Benefactor £42 P/M**

For more information visit tobaccofactorytheatres.com, call 0117 963 0949 or email development@tobaccofactorytheatres.com

Join our Business Club

Join our Business Club from just £500 +VAT and receive great benefits including:

- 2 for 1 tickets for staff members for a wide range of shows
- Corporate hospitality opportunities
- Complimentary tickets
- Networking opportunities

For further details contact Stephen Last, Development Director **stephen@tobaccofactorytheatres.com**



We are immensely grateful for the generous support of our Business Club and Production Sponsors, our Friends, Champions, Patrons, Benefactors and Production Fund Donors, and we remain indebted to our Fans For Life whose support was instrumental in the early years of the theatre. Thank You.

BUSINESS CLUB



Gold Members



MEMBERS

Benefactors

- Geoff Clements
- Alec Ewens
- Vivien Kies
- Tim and Judith Lockwood Jones
- Peter and Helen Wilde

Patrons

- Martin and Mary Bailey
- John Bedford
- Nev Boundy
- Rebecca Channack
- David Croom
- Ann Eggers
- Jack and Rosemary House
- Ruth Illston
- Tim and Liz Robertson
- Tony Rowlands
- Andrew and Decia Smith
- Julian Thomas
- Andrew Whitelaw

PRODUCTION FUND DONORS

Founder Benefactors

- Ken Edis
- John and Susan Hart
- Simon Inch
- Ros and Cameron Kennedy

Founder Patrons

- Michael and Lynne Bothamley

Platinum Patrons

- Martin and Mary Bailey
- Geoff Clements
- Anna Southall
- Helen and Peter Wilde

Gold Patrons

- John and Sue Cottrell
- Alec Ewens
- Vivien Kies
- Tim and Judith Lockwood Jones
- Christopher and Sarah Sharp
- P K Stembridge

Silver Patrons

- Judy Carver
- Roger Corrall
- Unsal and Diana Hassan
- Ruth and Stephen Illingworth
- Jo Luscombe McDonald
- Alan Moore
- Chris Sims

We are grateful to the following organisations and individuals who have supported core costs and the staging of world-class productions at Tobacco Factory Theatres:



We are also grateful to the significant number of organisations who support our work with Children and Young People (see P39 to find out who) and to our core funders (see P04).



Switch for Good
0800 254 0000
goodenergy.co.uk/tobacco-factory

We're a 100% renewable electricity company.



Choose local & affordable electricity for your home. Switching is green and simple.

Quote 'TFMAR15' when you switch and get a £40 voucher to spend on tickets for your favourite shows.



Offer ends 31/10/2015

Delivery without drama

Whistl is proud to sponsor the Brewery Theatre

To find out more visit www.whistl.co.uk

- ✉ Mail
- 📦 Packets & Parcels
- 🚚 Logistics
- 📍 Doordrop Media



SUNDAY MARKET



Every week 10am - 2.30pm

Shop from the wonderful selection of local producers at our market, offering hot food, fresh bread, cakes, cheese, fruit & veg, jams, fish, meat, pies - and much more. With craft stalls, flowers, books, bike servicing and kids craft activities, the market is a hub for the local community and a great place to meet friends and family.

On the first Sunday of the month, the market extends into Raleigh Rd, and also features **Retroville** - with vintage and retro clothing, homeware, furniture and records - alongside our regular stalls.

WWW.TOBACCOFACTORY.COM

THE MALL IS PROUD TO SPONSOR TOBACCO FACTORY THEATRES IN STAGING THE CHRISTMAS PRODUCTION OF THE LIGHT PRINCESS

The Joy of Christmas Shopping



A WORLD CLASS EDUCATION IN THE HEART OF BRISTOL

Badminton encourages intellectual curiosity and provides a fun and stimulating environment in which individual talents are nurtured.



e: admissions@badmintonschool.co.uk | t: 0117 905 5271 | badmintonschool.co.uk

Rathbone Investment Management is delighted to support Tobacco Factory Theatres

Rathbone Investment Management is one of the UK's largest and longest established providers of high-quality discretionary investment management services to individuals, families and their advisers.

For further information please contact
James Fox on **0117 929 1919** or email
james.fox@rathbones.com

Rathbones

Look forward

rathbones.com
 [@Rathbones1742](https://twitter.com/Rathbones1742)
 Rathbone Brothers Plc

The value of investments and income arising from them may fall as well as rise and you might get back less than you originally invested.

Rathbone Investment Management is authorised by the Prudential Regulation Authority and regulated by the Financial Conduct Authority and the Prudential Regulation Authority.

Visit us

- Open Morning Sat 26 September
- Visiting Morning Thurs 15 October
- Sixth Form Open Evening Tues 10 November
- Year 7 and 9 Entrance Exam Sat 23 January 2016
- Taster Days available by appointment



Red Maids' perform *The Seussification of A Midsummer Night's Dream*



For more information contact
Senior School 0117 989 8252
Junior School, 0117 962 9451
Westbury-on-Trym Bristol BS9



redmaids.co.uk

 @TFTHEATRES  TOBACCOFACTORYTHEATRES

Sign up to emails for the latest news & show
info on our website or by emailing [tickets@
tobaccofactorytheatres.com](mailto:tickets@tobaccofactorytheatres.com)

BOX OFFICE: 0117 902 0344
TOBACCOFACTORYTHEATRES.COM

